

Using the BarTender Line Tool

Overview:

This tutorial will show you how to use the BarTender Line Tool.

1. The Line Tool, (Fig. 1) is used to create liner elements in your layouts. To use the tool, begin by clicking the Line icon to load the cursor, and then the layout. The tool fixes a starting point upon the click and can freely pivot 360° around that fixed point and draw out to any length. When released, The line will appear on the layout in a selected state. (Fig. 2) Holding the shift key down on the click and drag, will constrain the line in the direction of the drag.

The line may be immediately styled by using the Line and Shape Toolbar, (Fig. 3) or right clicked or double clicked to bring up the properties menu. (Fig. 4)

2. The Line and Shape Toolbar lets you style line width, a dash style and compound line styles. As with all tools, the line object must be selected for the toolbar to be active. The color is always going to be set to some combination of black and white.

The line thickness can be set using the Line Thickness tool, (Fig. 5) while dashes may be added using the Dash Style tool, (Fig. 6) and multiple line combinations can be set using the Compound Style tool, (Fig. 7)

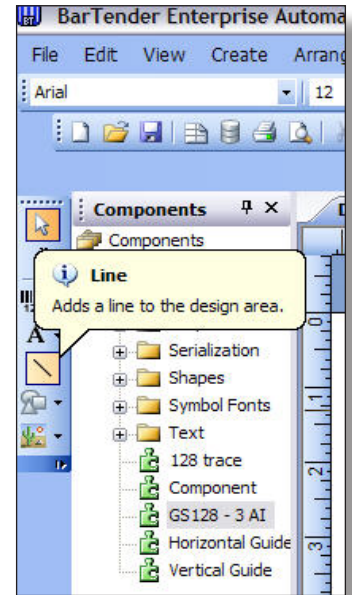


Fig. 1

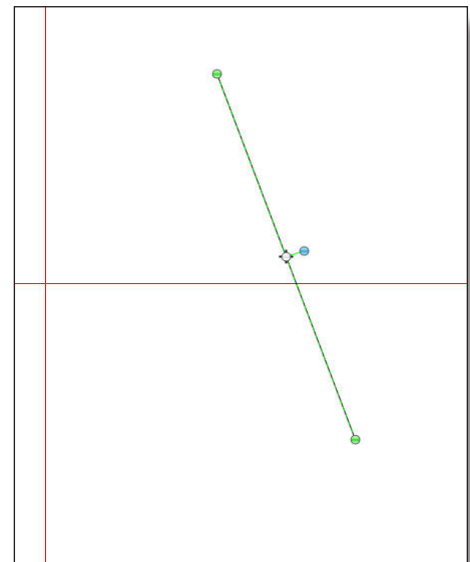


Fig. 2

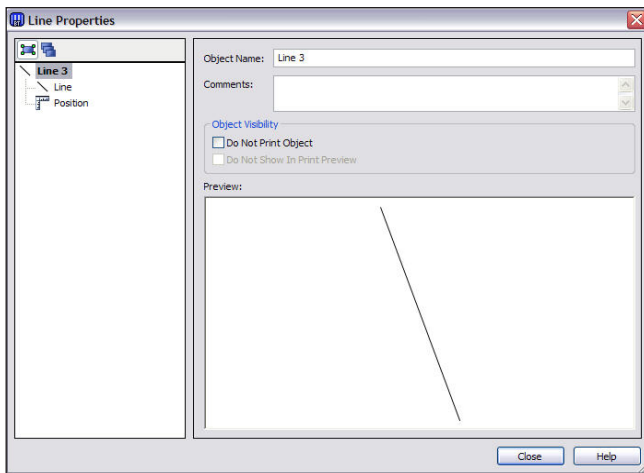


Fig. 4

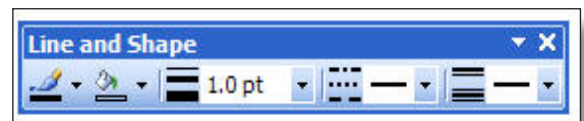


Fig. 3



Using the BarTender Line Tool

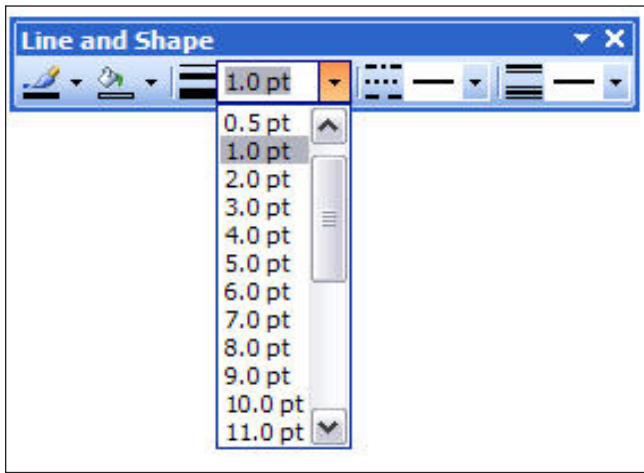


Fig. 5

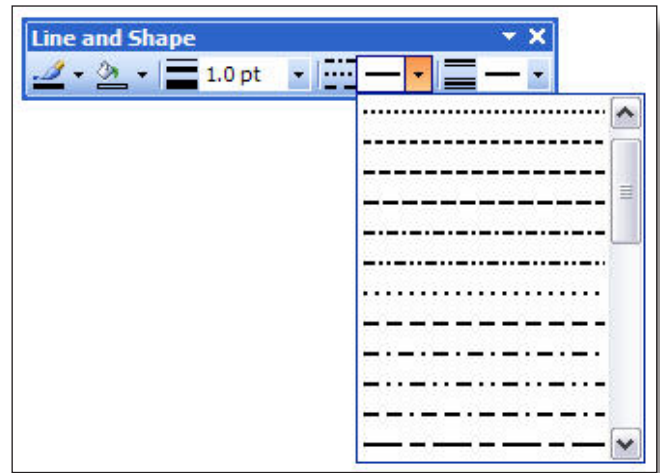


Fig. 6

3. The Properties Menu, (Fig. 8) begins with a naming opportunity and the option to have the line print or not to print. Click the Line tab.

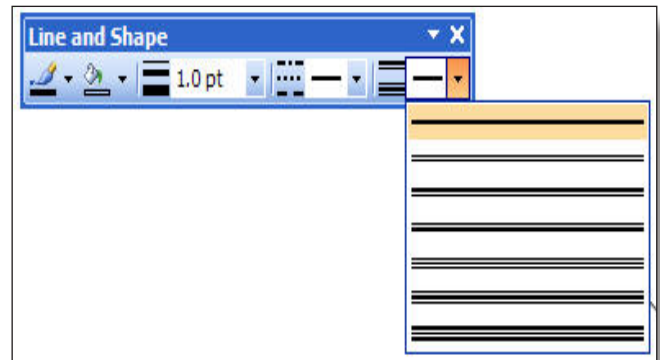


Fig. 7

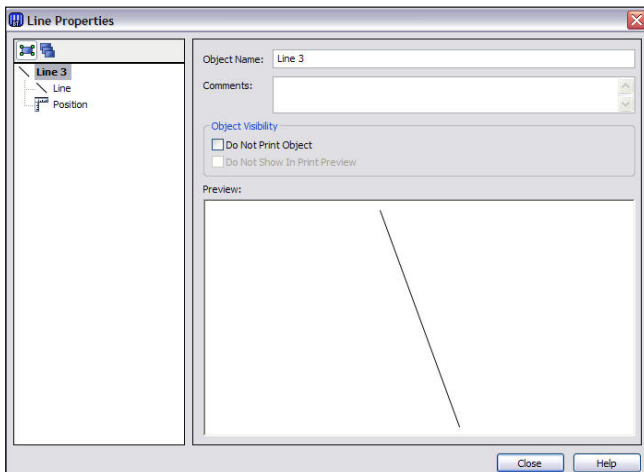


Fig. 8

3. The Line tab, (Fig. 9) lets you structure the Length, Thickness, Dash Style and Compound Style. Transparency will always be set to 0 and the black.

Options are also provided to locate the starting and end points and specify a cap. Click the Position tab.

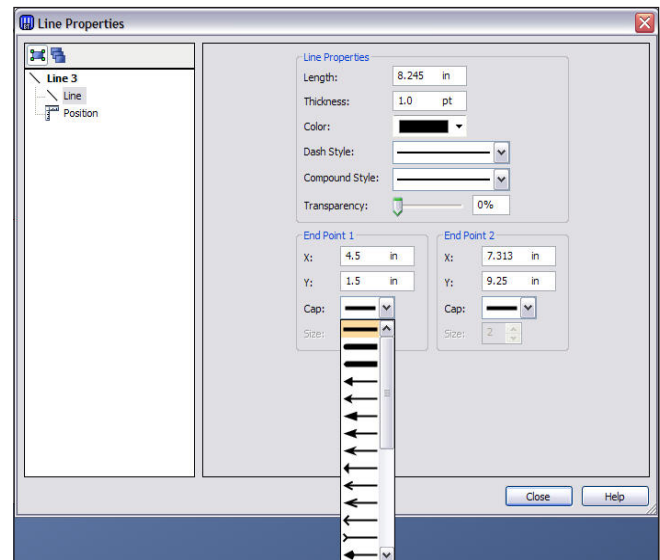
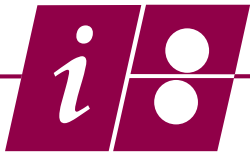


Fig. 9



Using the BarTender Line Tool

4. The Position tab, (Fig. 10) lets you Set a reference point for the object then locate it based on that point using x-y coordinates. You can also simply drag the line on the layout. You can also set the rotation and lock the line in position in the layout.

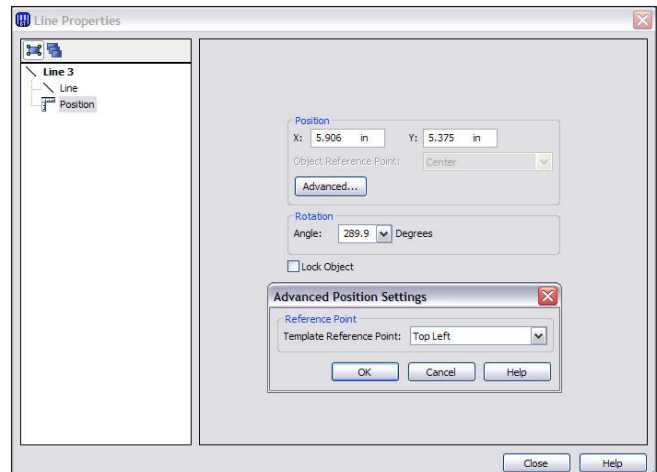


Fig. 10