

## Setting up BarTender for Iconotech

### Overview:

It is necessary to set up the BarTender software with a few base configurations to perform in the Iconotech work environment. This Tutorial will show you how to do that.

1. With the BarTender software open, go to File | BarTender Documents options. On the View tab, Configure the rulers to you liking and set up the grid if you wish. (Fig. 1)
2. On the Regional Settings tab, configure as shown. (Fig. 2) Click OK, there is nothing else to set on the other tabs.
3. Go to File | Print and select the appropriate Iconotech printer driver. (Fig. 3) Click on Document Properties and verify that the driver is configured correctly. Select the Object Print Method tab.

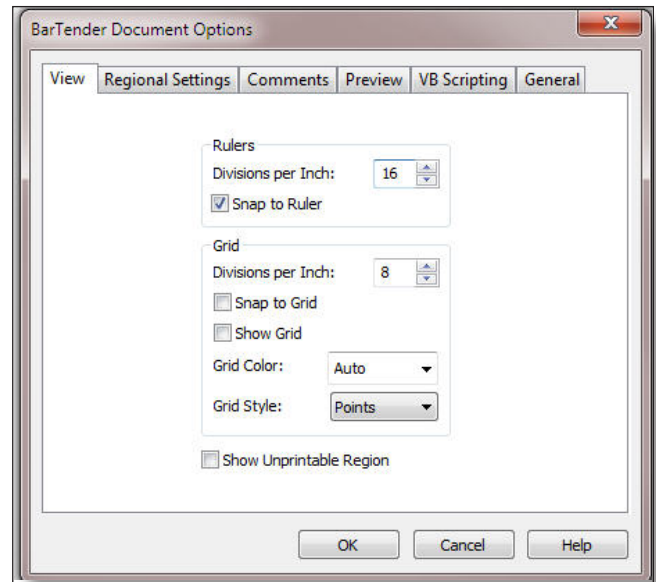


Fig. 1

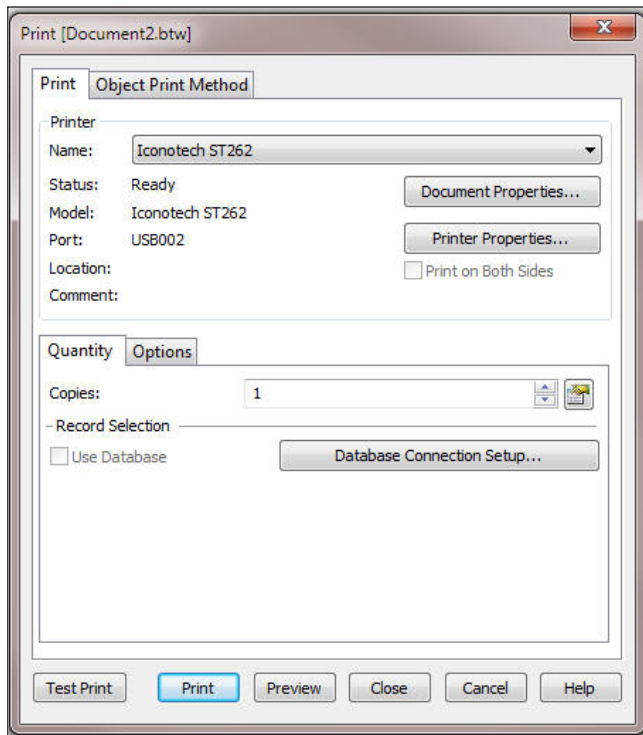


Fig. 3

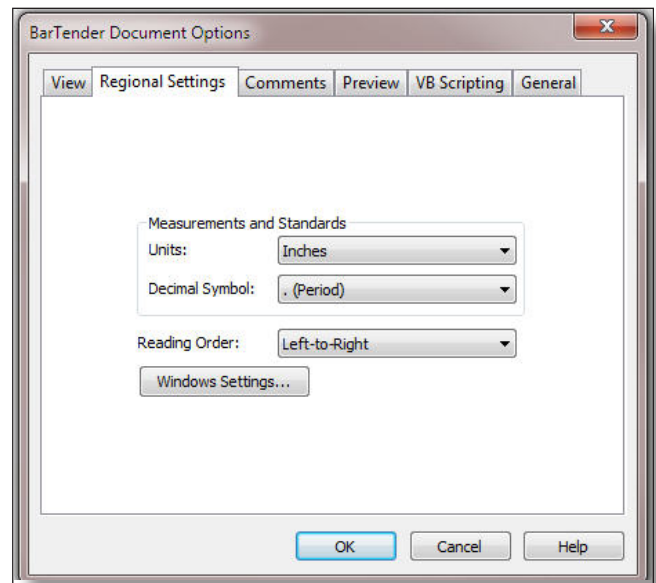


Fig. 2



## Setting up BarTender for Iconotech

4. On the Object Print Method tab, configure as shown and close. (Fig. 4) Go to File | Page Setup.

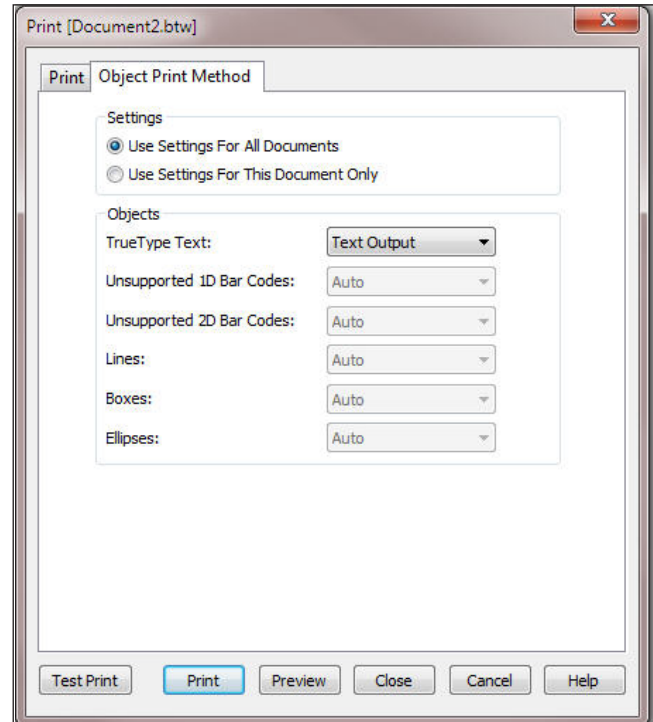


Fig. 4

4. Select the Page tab. (Fig. 5) For a box configuration, choose the 32 x 12 page size from the drop down menu. For a bag configuration, choose the 12 x 32 page size. Select the layout tab. On the layout tab, set the Rows and Columns to 1. (Fig. 6) Choose the shape tab.

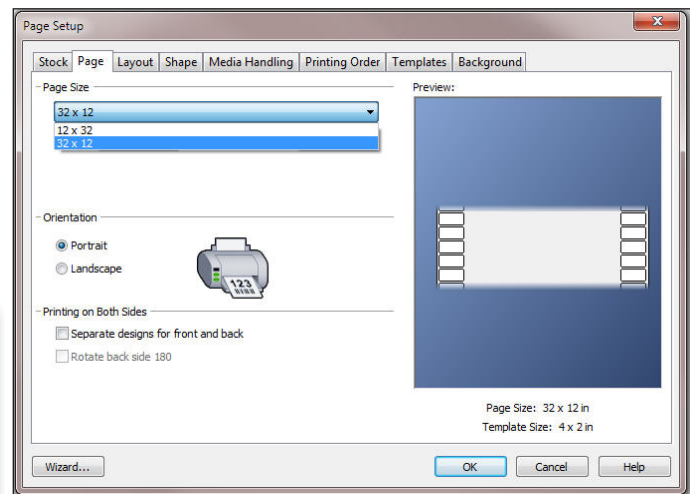


Fig. 5

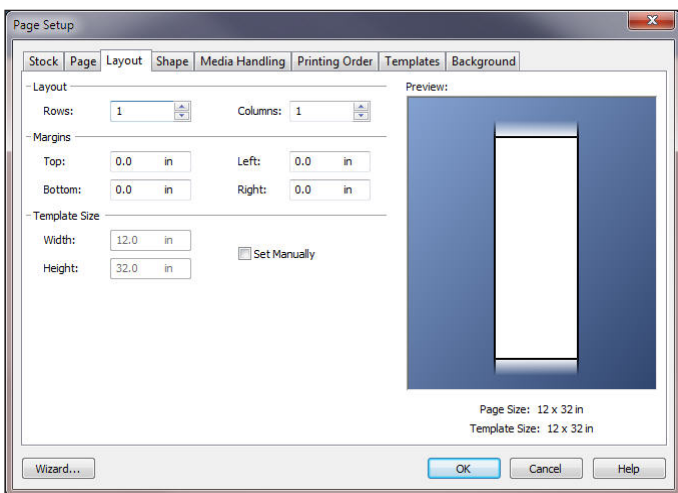
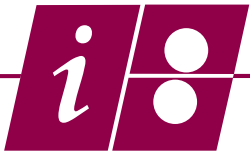


Fig. 6



## Setting up BarTender for Iconotech

5. On the Shape tab, select Rectangle as the Template Shape (Fig. 7) Click OK. The page size will appear on the desktop, go to File | Save and save as “Iconotech Blank” in a location of your choosing.

If you are printing bags and boxes or both types of bags, please continue on with the next tutorial BT-003, Setting up BarTender for Multiple Page Sizes. If you have only one format, continue on with tutorial BT004, Formatting the Iconotech Work Environment.

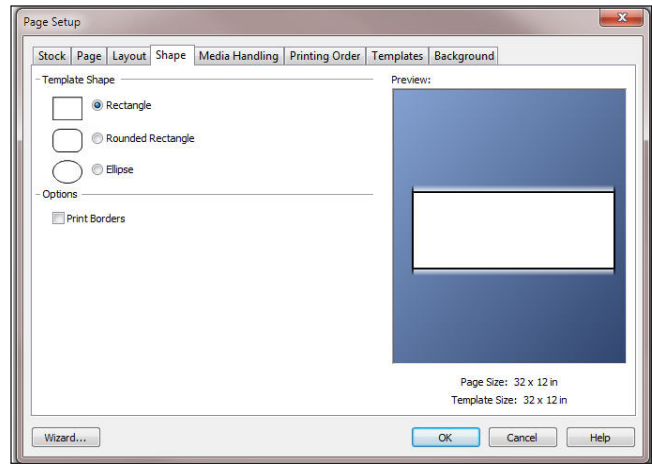


Fig. 7